



June 2017 Letting Report

Meg Pirkle, P.E.
Chief Engineer

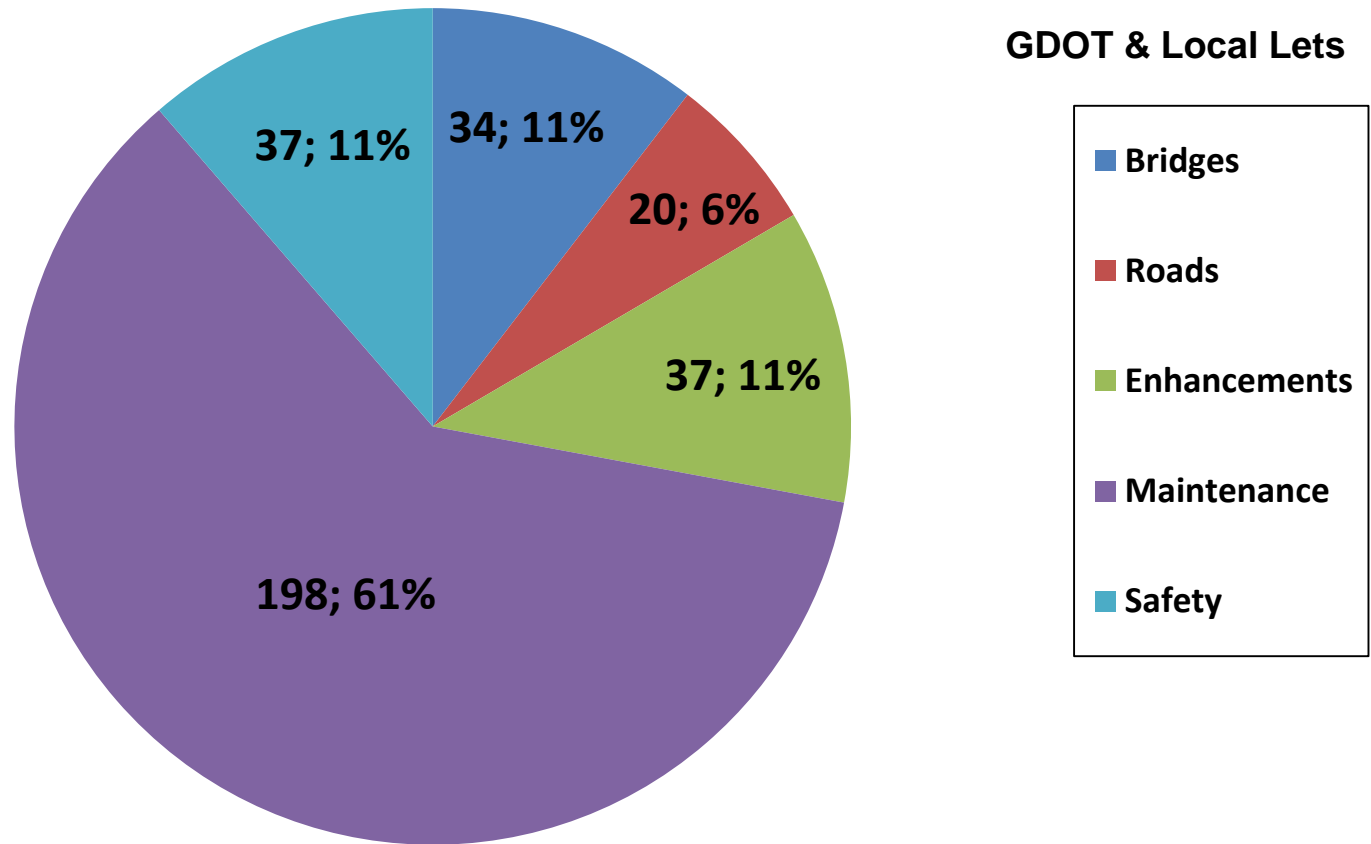
May 18, 2017



Fiscal Year 2017 Letting Report

Number of Projects Let in FY 2017

(Contractor Low Bid Award Data)



Total = 326

Does not include LMIG Projects

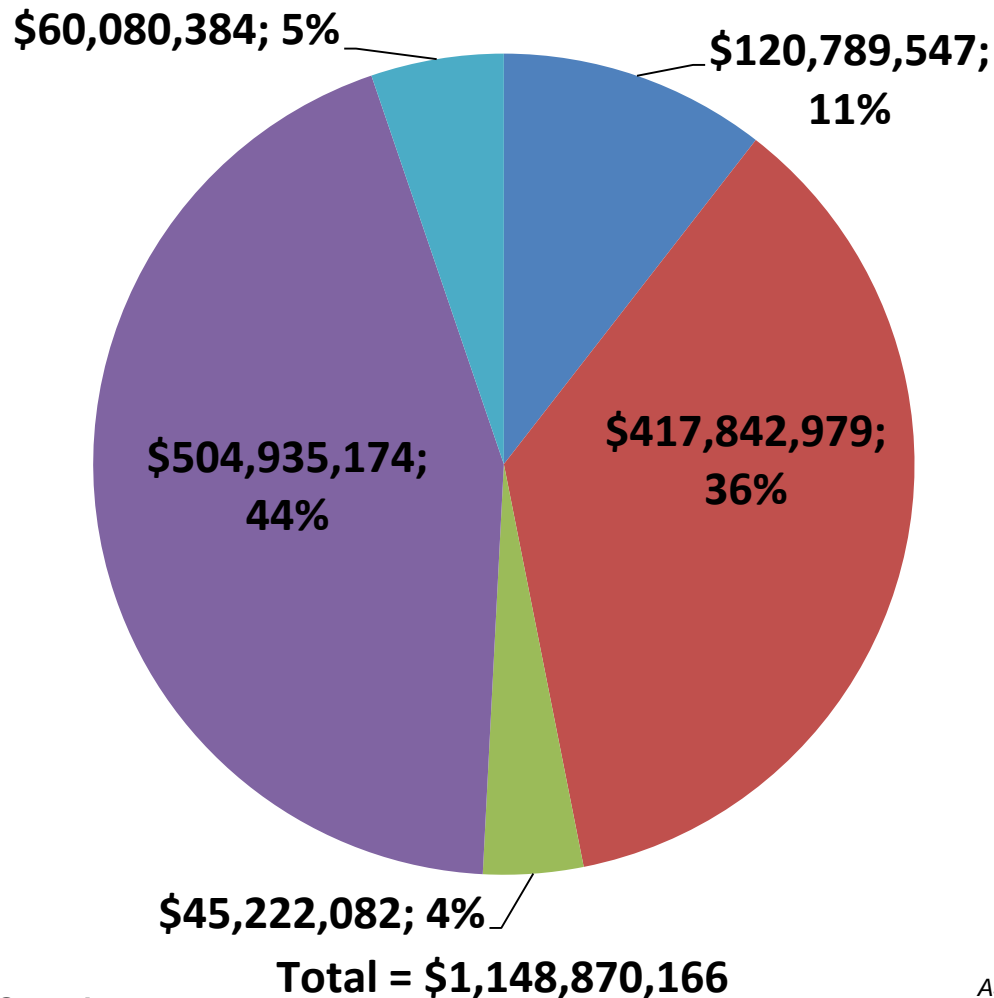
As of May 3, 2017
Source Construction Bidding Administration



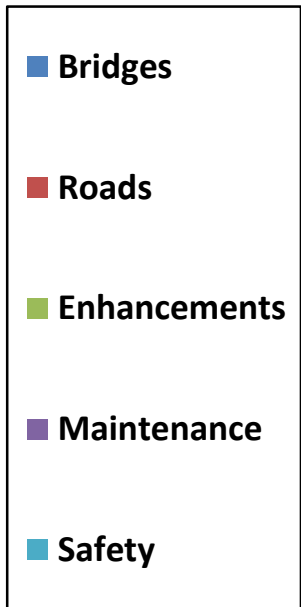
Fiscal Year 2017 Letting Report

Dollar Amount of Projects Let in FY 2017

(Contractor Low Bid Award Data)



GDOT & Local Lets



Does not include LMIG Projects

As of May 3, 2017
Source Construction Bidding Administration



April 2017 Letting Results

Summary	Presented to GDOT Board (Includes Adjustments)	Low Bid (Awarded to Contractor)	Low Bid w/Adjustments (Total Project Obligation)
GDOT Let (Project Count)	28	27	27
GDOT Let (Dollars)	\$83,699,276	\$94,806,418	\$96,959,320
Local Let (Project Count)	3	N/A Local Let	N/A Local Let
Local Let (Dollars)	\$3,571,206	N/A Local Let	N/A Local Let

*Low Bid Award Amount includes the Deferred and Awarded projects.
Does not include Engineering and Inspection, Utilities, Liquid AC, Incentives, LMIG and Rejected projects.



GDOT Let Projects

June 2017 Letting



GDOT Let Projects

June 2017 Letting

Project ID	Description	Primary County	Primary Work Type	Congressional District	Project Let By	Project Sponsor
0015170	OFF-SYSTEM SAFETY IMPROVEMENTS @ 46 LOCS IN BRYAN COUNTY	BRYAN	Signing	001	DOT	GDOT
0015173	OFF-SYSTEM SAFETY IMPROVEMENTS @ 14 LOCS IN WAYNE COUNTY	WAYNE	Signing	001	DOT	GDOT
0015174	OFF-SYSTEM SAFETY IMPROVEMENTS @ 5 LOCS IN WARE COUNTY	WARE	Signing	001	DOT	GDOT
0015175	OFF-SYSTEM SAFETY IMPROVEMENTS @ 9 LOCS IN BACON COUNTY	BACON	Signing	001	DOT	GDOT
0015201	I-95 @ 5 LOCS IN MCINTOSH COUNTY - CABLE BARRIERS	MCINTOSH	Barriers	001	DOT	GDOT
M005386	SR 4 & SR 25 @ 17 LOCS IN DISTRICT 5 - BRIDGE PRESERVATION	CAMDEN	Bridges	001	DOT	GDOT
0015524	DESIGN-BUILD BRIDGE REPLACEMENT @ 6 LOC IN DISTRICT 2; 3 & 4	APPLING	Bridges	001, 002, 008	DOT	GDOT
0015185	OFF-SYSTEM SAFETY IMPROVEMENTS @ 28 LOCS IN LOWNDES COUNTY	LOWNDES	Signing	001, 008	DOT	GDOT
0013643	I-16 @ 6 LOCS IN DIST 2 & @ 5 LOCS IN DIST 5 - CABLE BARRIERS	APPLING	Barriers	001, 012	DOT	GDOT
0007153**	SR 200 @ ICHAWAYNOCHAWAY CREEK	BAKER	Bridges	002	DOT	GDOT

****Note: Bridge Bond Project**



GDOT Let Projects

June 2017 Letting

Project ID	Description	Primary County	Primary Work Type	Congressional District	Project Let By	Project Sponsor
0007154**	SR 216 @ ICHAWAYNOCHAWAY CREEK	BAKER	Bridges	002	DOT	GDOT
0009862**	SR 45 @ CORDRAYS POND DRAIN & OVERFLOW	CALHOUN	Bridges	002	DOT	GDOT
0010121	SR 3BU/SR 520BU @ 9 LOCS & SR 91 @ 9 LOCS - SIGNAL UPGRADES	DOUGHERTY	Signals	002	DOT	GDOT
0010607	ANDERSONVILLE HISTORICAL TRAIN DEPOT	SUMTER	TE-Rehab Hist Trans Bldg	002	LOC	Andersonville
0010620	CR 2228/FORT BENNING RD FM CR 325/LEVY RD TO FORT BENNING	MUSCOGEE	TE-Bike/Ped Facility	002	LOC	Columbus
0015178	OFF-SYSTEM SAFETY IMPROVEMENTS @ 25 LOCS IN CRAWFORD COUNTY	CRAWFORD	Signing	002	DOT	GDOT
0015186	OFF-SYSTEM SAFETY IMPROVEMENTS @ 17 LOCS IN DOUGHERTY COUNTY	DOUGHERTY	Signing	002	DOT	GDOT
0012624	REDWINE ROAD & STARRS MILL SCHOOL COMPLEX MULTI-USE PATH	FAYETTE	Multi-use Trail	003	DOT	Fayette County
0013646	I-185 FM TROUP CO LINE TO MUSCOGEE CO LINE - CABLE BARRIERS	HARRIS	Barriers	003	DOT	GDOT
0013657	I-85 FM ALABAMA STATE LINE TO MERIWETHER CO - CABLE BARRIERS	TROUP	Barriers	003	DOT	GDOT

****Note: Bridge Bond Project**



GDOT Let Projects

June 2017 Letting

Project ID	Description	Primary County	Primary Work Type	Congressional District	Project Let By	Project Sponsor
0015166	OFF-SYSTEM SAFETY IMPROVEMENTS @ 57 LOCS IN CARROLLTON	CARROLL	Signing	003	DOT	GDOT
0015176	OFF-SYSTEM SAFETY IMPROVEMENTS @ 20 LOCS IN PIKE COUNTY	PIKE	Signing	003	DOT	GDOT
0015177	OFF-SYSTEM SAFETY IMPROVEMENTS @ 17 LOCS IN LAMAR COUNTY	LAMAR	Signing	003	DOT	GDOT
321880-	SR 41 @ CSX RAILROAD W OF WARM SPRINGS; INC DETOUR	MERIWETHER	Bridges	003	DOT	GDOT
321530-	EAST-WEST 1-WAY PAIR FM W OF NS #718408K TO E OF HENRY ST	HENRY	Realignment	003, 010	DOT	GDOT
0015523	DESIGN-BUILD BRIDGE REPLACEMENT @ 8 LOC IN DISTRICT 2; 3 & 6	APPLING	Bridges	003, 010, 012, 014	DOT	GDOT
0007613	CITY CENTER IN CLARKSTON STREETScape	DEKALB	Streetscapes	004	LOC	Clarkston
0011640	HARDIN/O KELLY STREET FM DOGWOOD DRIVE TO GREEN STREET - LCI	ROCKDALE	Bicycle/Ped. Facility	004	LOC	Conyers
0015172	OFF-SYSTEM SAFETY IMPROVEMENTS @ 5 LOCS IN CONYERS	ROCKDALE	Pavement Markings	004	DOT	GDOT
M005417	SR 14 @ NS #718047H - BRIDGE REHAB	FULTON	Bridges	005	DOT	GDOT

****Note: Bridge Bond Project**



GDOT Let Projects

June 2017 Letting

Project ID	Description	Primary County	Primary Work Type	Congressional District	Project Let By	Project Sponsor
M005399	I-285 @ I-75 SB & NB RAMP IN COBB COUNTY - BRIDGE REHAB	COBB	Bridges	006, 011	DOT	GDOT
0006439	SR 10/US 78 @ SR 124; INC HENRY CLOWER BLVD	GWINNETT	Intersection Improvement	007	DOT	GDOT
0010658	SR 13 FROM CS 1179/DAVENPORT ROAD TO SR 120	GWINNETT	TE-Landscape/Beautify	007	LOC	Duluth
0000762	I-75 FM N OF SR 133 TO COOK COUNTY LINE - PHASE II	LOWNDES	Interchange	008	DOT	GDOT
0011723	MLK JR DR @ CSX #643305Y; INC 2 CLOSURES IN QUITMAN	BROOKS	RRX Warning Device	008	DOT	GDOT
0015182	OFF-SYSTEM SAFETY IMPROVEMENTS @ 15 LOCS IN BLECKLEY COUNTY	BLECKLEY	Signing	008	DOT	GDOT
0015187	OFF-SYSTEM SAFETY IMPROVEMENTS @ 19 LOCS IN COLQUITT COUNTY	COLQUITT	Signing	008	DOT	GDOT
0000425	I-985 NEW INTERCHANGE N OF SR 13 CROSSOVER NEAR MARTIN RD	HALL	Interchange	009	DOT	GDOT
0015181	OFF-SYSTEM SAFETY IMPROVEMENTS @ 32 LOCS IN ELBERT COUNTY	ELBERT	Signing	009	DOT	GDOT
0015184	OFF-SYSTEM SAFETY IMPROVEMENTS @ 7 LOCS IN HALL COUNTY	HALL	Signing	009	DOT	GDOT

****Note: Bridge Bond Project**



GDOT Let Projects

June 2017 Letting

Project ID	Description	Primary County	Primary Work Type	Congressional District	Project Let By	Project Sponsor
0015188	OFF-SYSTEM SAFETY IMPROVEMENTS @ 2 LOCS IN LUMPKIN COUNTY	LUMPKIN	Signing	009	DOT	GDOT
0015436	DESIGN-BUILD BRIDGE REPLACEMENT @ 5 LOCS IN DISTRICT 1	FRANKLIN	Bridges	009	DOT	GDOT
0015202	SR 10 LOOP @ 2 LOCS IN CLARKE & OCONEE COUNTY-CABLE BARRIERS	CLARKE	Barriers	009, 010	DOT	GDOT
0010670	SEVEN ISLANDS ROAD VISITORS CENTER	JASPER	TE-Rehab Hist Trans Bldg	010	LOC	Monticello
0013650	I-20 FM WALTON CO LINE TO TALIAFERRO CO LINE-CABLE BARRIERS	MORGAN	Barriers	010	DOT	GDOT
0015191	OFF-SYSTEM SAFETY IMPROVEMENTS @ 9 LOCS IN JEFFERSON COUNTY	JEFFERSON	Signing	010	DOT	GDOT
0015192	OFF-SYSTEM SAFETY IMPROVEMENTS @ 10 LOC IN WASHINGTON COUNTY	WASHINGTON	Signing	010	DOT	GDOT
0015193	OFF-SYSTEM SAFETY IMPROVEMENTS @ 10 LOCS IN JOHNSON COUNTY	JOHNSON	Signing	010	DOT	GDOT
0012607	SR 3/US 41 @ SR 120 ALT	COBB	Intersection Improvement	011	LOC	Marietta
0015167	OFF-SYSTEM SAFETY IMPROVEMENTS @ 53 LOCS IN CARTERSVILLE	BARTOW	Signing	011	DOT	GDOT

****Note: Bridge Bond Project**



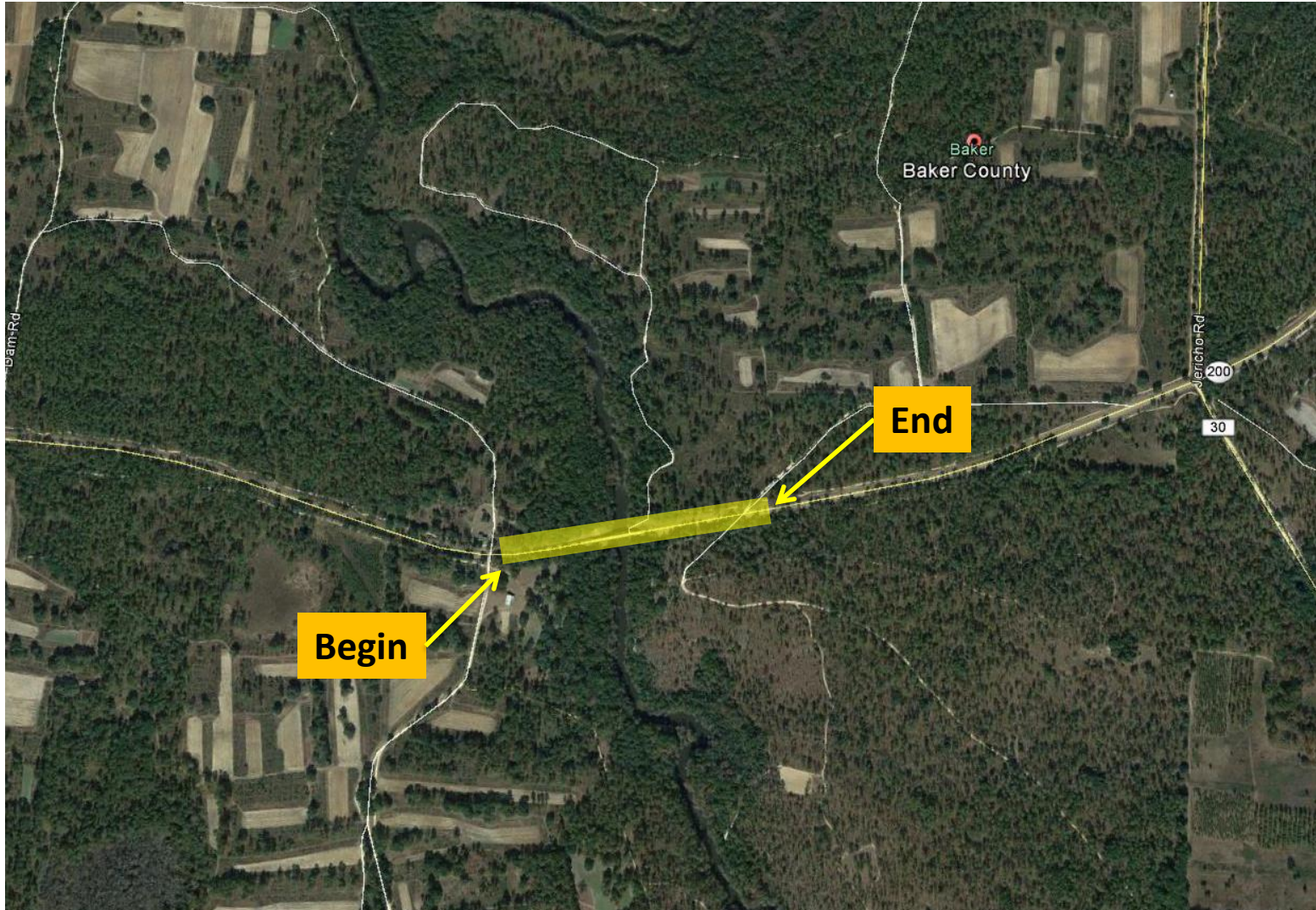
GDOT Let Projects

June 2017 Letting

Project ID	Description	Primary County	Primary Work Type	Congressional District	Project Let By	Project Sponsor
0008976	ALTAMAHA TECHNICAL COLLEGE LANDSCAPE IMPROVEMENTS	APPLING	TE-Landscape/Beautify	012	LOC	Appling County
0015183	OFF-SYSTEM SAFETY IMPROVEMENTS @ 25 LOCS IN SWAINSBORO	EMANUEL	Signing	012	DOT	GDOT
0015169	OFF-SYSTEM SAFETY IMPROVEMENTS @ 13 LOCS IN UNION CITY	FULTON	Pavement Markings	013	DOT	GDOT
0013240	CATOOSA COUNTY RESURFACING @ 4 LOCS	CATOOSA	Resurface & Maintenance	014	DOT	Catoosa County
0015168	OFF-SYSTEM SAFETY IMPROVEMENTS @ 35 LOCS IN FLOYD COUNTY	FLOYD	Signing	014	DOT	GDOT
0015171	OFF-SYSTEM SAFETY IMPROVEMENTS @ 9 LOCS IN ROME	FLOYD	Signing	014	DOT	GDOT

****Note: Bridge Bond Project**

SR 200 @ ICHAWAYNOCHAWAY CREEK Bridge Replacement in Baker County Congressional District 2



SR 200 @ ICHAWAYNOCHAWAY CREEK Bridge Replacement in Baker County Congressional District 2 (Continued)



SR 216 @ ICHAWAYNOCHAWAY CREEK Bridge Replacement in Baker County Congressional District 2





SR 216 @ ICHAWAYNOCHAWAY CREEK Bridge Replacement in Baker County Congressional District 2 (Continued)



SR 45 @ CORDRAYS POND DRAIN & OVERFLOW Bridge Replacement Project in Calhoun County Congressional District 2



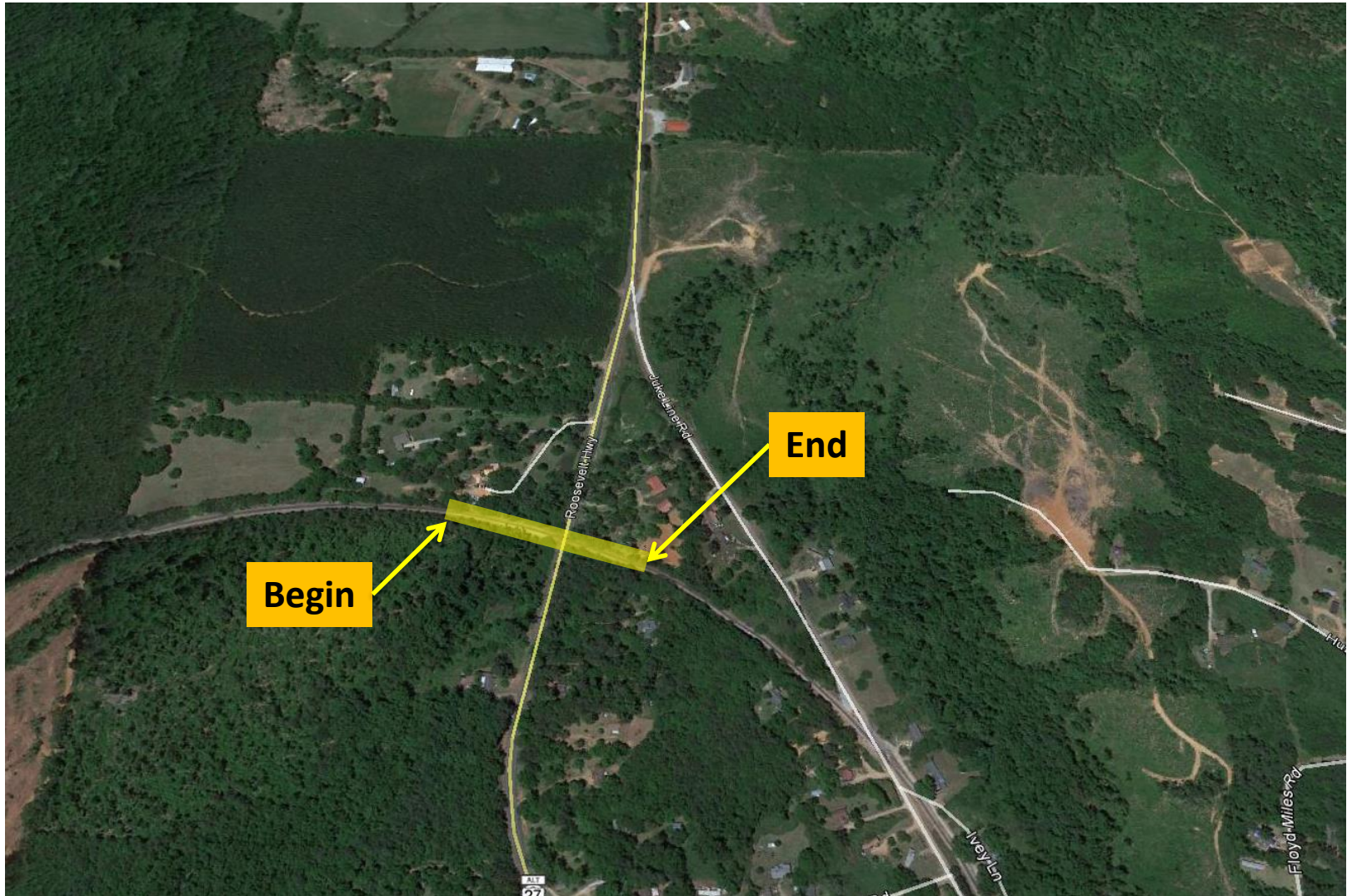
SR 45 @ CORDRAYS POND DRAIN & OVERFLOW Bridge Replacement Project in Calhoun County Congressional District 2 (Continued)



SR 41 @ CSX RAILROAD W OF WARM SPRINGS; INC DETOUR

Bridge Replacement in Meriwether County

Congressional District 3



SR 41 @ CSX RAILROAD W OF WARM SPRINGS; INC DETOUR

Bridge Replacement in Meriwether County

Congressional District 3 (Continued)



I-75 FM N OF SR 133 TO COOK COUNTY LINE - PHASE II

Interchange Reconstruction in Lowndes County

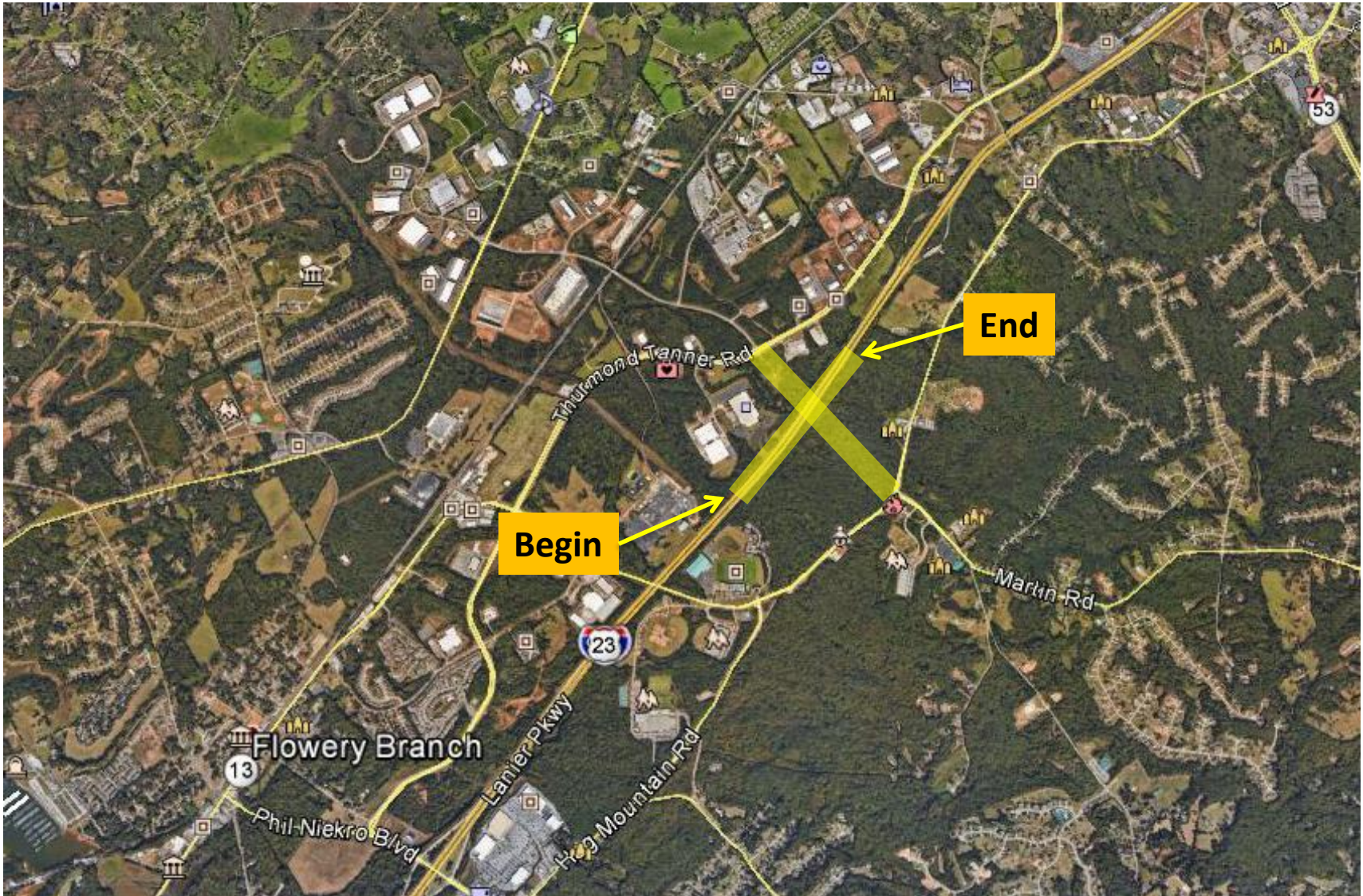
Congressional District 8



I-985 NEW INTERCHANGE N OF SR 13 CROSSOVER NEAR MARTIN RD

New Interchange in Hall County

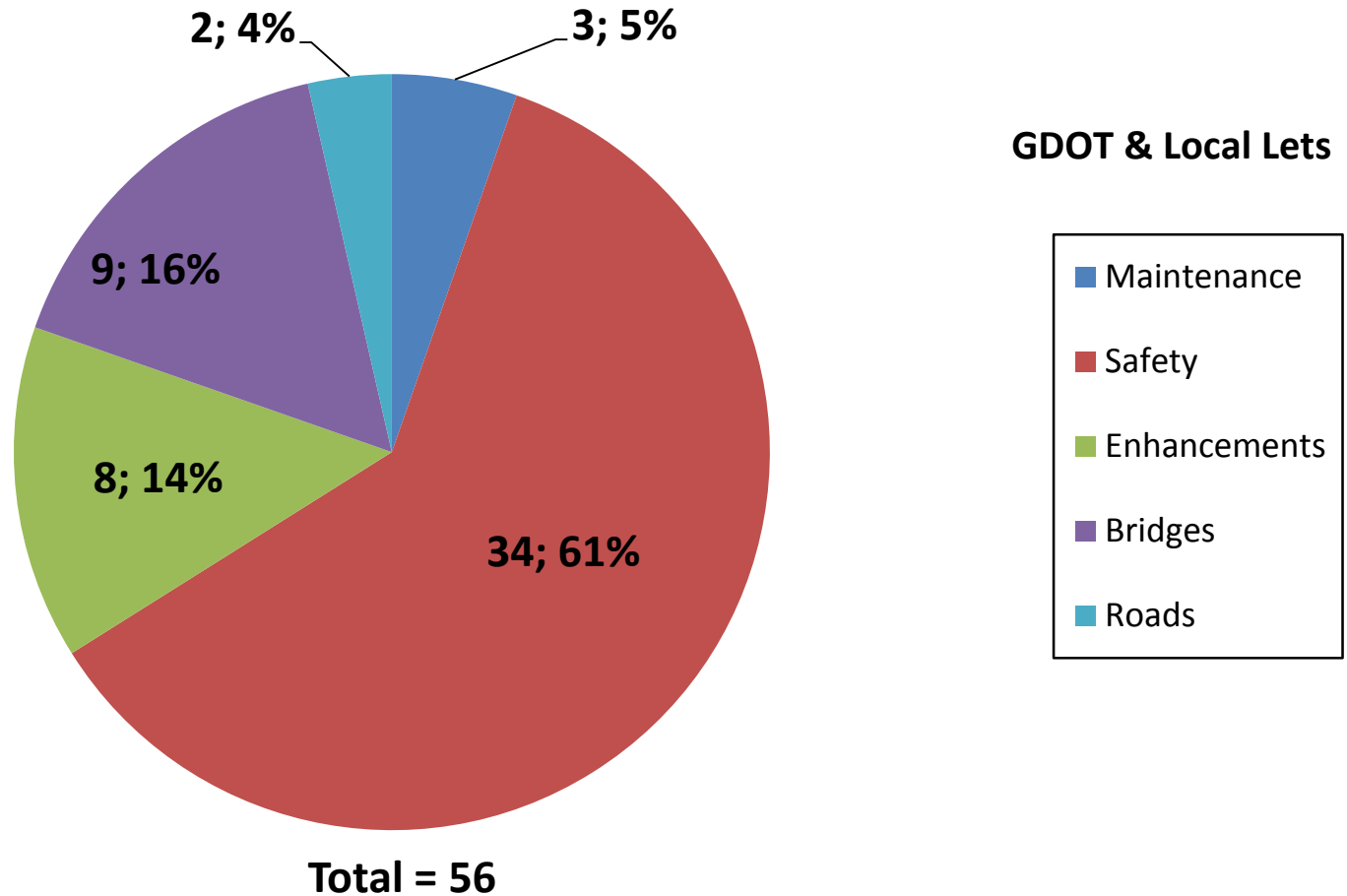
Congressional District 9





Fiscal Year 2017 Letting Report

Number of Projects June 2017 Letting



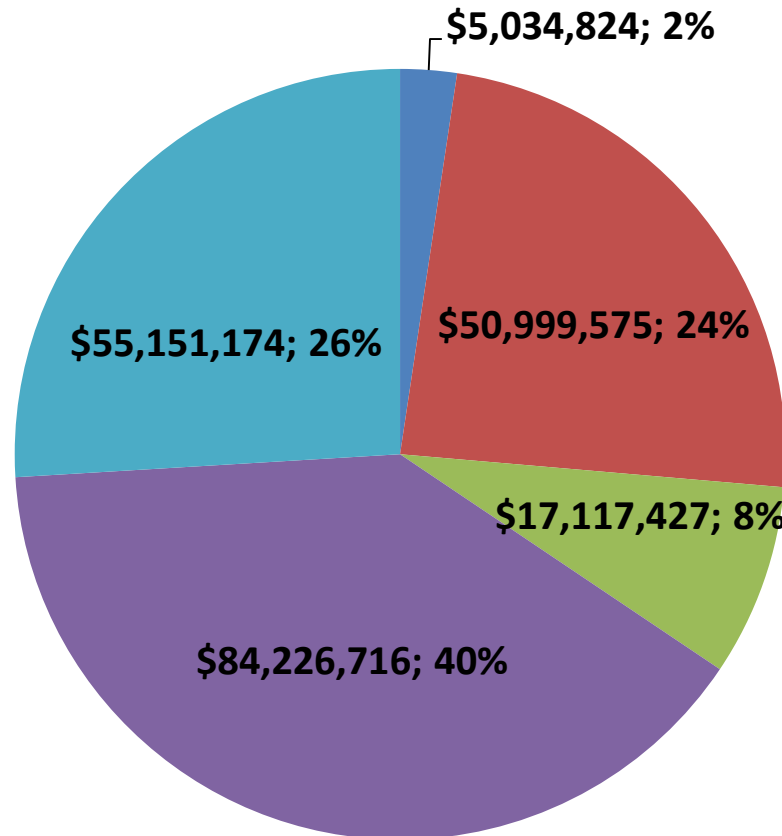
Does not include LMIG Projects

*As of May 10, 2017
Source TPro – Chief Approved FY '17 Letting List*

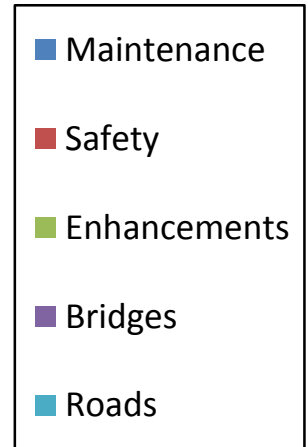


Fiscal Year 2017 Letting Report

Dollar Amount of Projects June 2017 Letting



GDOT & Local Lets



Total = \$212,529,716

Does not include LMIG Projects

As of May 10, 2017

Source TPro – Chief Approved FY '17 Letting List



Proposed Revisions To The Construction Work Program

Jay Roberts
Director of Planning

May 18, 2017



May 2017 CWP Revision

Board Revisions:

1. P.I. No. 0015620, Clinch County, CR 203/Shiloh Church Road @ Surveyors Creek S of Homerville
Bridge Replacement in Congressional District 1

Action: Addition to the Program
2. P.I. No. 0015619, Echols County, CR 96/Frank Culpepper Rd @ Alapahoochee River W of Statenville
Bridge Replacement in Congressional District 1

Action: Addition to the Program
3. P.I. No. 0015601, Schley County, CR 133/Ebenezer Road @ Muckalee Creek 7.5 MI W of Ellaville
Bridge Replacement in Congressional District 2

Action: Addition to the Program
4. P.I. No. 0015615, Upson County, CR 422/Jeff Davis Road @ Ten Mile Creek 2 MI NW of Thomaston
Bridge Replacement in Congressional District 3

Action: Addition to the Program
5. P.I. No. 0015618, Gwinnett County, CS 833/Martin Farm Road @ Suwanee Creek in Suwanee
Bridge Replacement in Congressional District 7

Action: Addition to the Program



May 2017 CWP Revision

Board Revisions:

6. P.I. No. 0015617, Colquitt County, CR 486 @Warrior Creek;@ Warrior Creek Overflow & @ Ty Ty Creek
Bridge Replacement in Congressional District 8

Action: Addition to the Program
7. P.I. No. 0015614, Lowndes County, CR 136/Old Quitman Road @ CSX #637487Y 6 MI W of Valdosta
Bridge Replacement in Congressional District 8

Action: Addition to the Program
8. P.I. No. 0015603, Brooks County, CR 245/Old Madison Road @ Piscola Creek 3.5 MI SE of Quitman
Bridge Replacement in Congressional District 8

Action: Addition to the Program
9. P.I. No. 0015616, White County, CR 30/Airport Road @ Mossy Creek Trib 4.2 MI SE of Cleveland
Bridge Replacement in Congressional District 9

Action: Addition to the Program
10. P.I. No. 0015611, Gilmer County, CR 145/Vanilla Lane @ Big Turniptown Creek NE of Ellijay
Bridge Replacement in Congressional District 9

Action: Addition to the Program



May 2017 CWP Revision

Board Revisions:

11. P.I. No. 0015608, Banks County, CR 92/Wrights Mill Road @ Hudson River 7.3 MI SE of Homer
Bridge Replacement in Congressional District 9

Action: Addition to the Program

12. P.I. No. 0015613, Johnson County, CS 666/Cross Cedar Road @ Big Cedar Creek E of Wrightsville
Bridge Replacement in Congressional District 10

Action: Addition to the Program

13. P.I. No. 0015610, Barrow County, CR 268/Old Thompson Mill Rd @ Little Mulberry River N of Winder
Bridge Replacement in Congressional District 10

Action: Addition to the Program

14. P.I. No. 0015609, Barrow County, CR 93/Patrick Mill Road @ Apalachee River 3.6 MI S of Carl
Bridge Replacement in Congressional District 10

Action: Addition to the Program

15. P.I. No. 0015602, Hancock County, CR 101/Water works Road @ CSX #279806B 2.1 MI W of Sparta
Bridge Replacement in Congressional District 10

Action: Addition to the Program



May 2017 CWP Revision

Board Revisions:

16. P.I. No. 0015623, Jenkins County, CR 48/Harrison Road @ Horse Creek 6.4 MI SE of Millen
Bridge Replacement in Congressional District 12

Action: Addition to the Program

17. P.I. No. 0015622, Emanuel County, CR 454/Lambs Bridge Rd @ Little Canoochee Crk NE of Swainsboro
Bridge Replacement in Congressional District 12

Action: Addition to the Program

18. P.I. No. 0015621, Emanuel County, CR 454/Lambs Bridge Rd @ Canoochee Crk NE of Swainsboro
Bridge Replacement in Congressional District 12

Action: Addition to the Program

19. P.I. No. 0015605, Bulloch County, CR 927/Old Hwy 46 @ Ash Branch 11.6 MI SE of Brooklet
Bridge Replacement in Congressional District 12

Action: Addition to the Program

20. P.I. No. 0015604, Paulding County, CR 591/Morningside Drive @ Lick Log Creek 2 MI S of Hiram
Bridge Replacement in Congressional District 14

Action: Addition to the Program



May 2017 CWP Revision

Board Revisions:

21. P.I. No. 0015612, Haralson County, CR 347/Monroe Mill Road @ Tallapoosa River NE of Tallapoosa Bridge Replacement in Congressional District 14

Action: Addition to the Program



June 2017 CWP Revision

Board Revisions:

1. P.I. No. 0015660, Brantley County, CR 122/Humpback Rd @ Little Satilla River 6 MI N of Nahunta Bridge Replacement in Congressional District 1

Action: Addition to the Program

2. P.I. No. 0015641, Pierce County, CR 305/Tyre Bridge Rd @ Sixty Foot Creek N of Patterson City Bridge Replacement in Congressional District 1

Action: Addition to the Program

3. P.I. No. 0015652, Talbot County, CS 670/Gorman Road @ CSX #638437Y in Talbotton Bridge Replacement in Congressional District 2

Action: Addition to the Program

4. P.I. No. 0015651, Crisp County, CR 73/Watson Creek @ Reedy Branch Trib 5.9 MI E of Arabi Bridge Replacement in Congressional District 2

Action: Addition to the Program

5. P.I. No. 0015640, Sumter County, CR 313/Salter Mill Road @ Pessell Creek 2.8 MI S of Plains Bridge Replacement in Congressional District 2

Action: Addition to the Program



June 2017 CWP Revision

Board Revisions:

6. P.I. No. 0015639, Macon County, CS 699/Hamilton Road @ Beaver Creek in Montezuma Bridge Replacement in Congressional District 2

Action: Addition to the Program

7. P.I. No. 0015638, Taylor County, CR 128/Turner Road @ Patsiliga Creek 2 MI NW of Reynolds Bridge Replacement in Congressional District 2

Action: Addition to the Program

8. P.I. No. 0015637, Taylor County, CR 126/Turner Rd @ Patsiliga Creek Trib 3 MI NW of Reynolds Bridge Replacement in Congressional District 2

Action: Addition to the Program

9. P.I. No. 0015629, DeKalb County, SR 236 from CR 5174/Oak Grove Road to CR 1456/Pangborn Road Enhancement/Sidewalks in Congressional District 4

Action: Addition to the Program

10. P.I. No. 0015646, DeKalb County, CR 3271/Mercer University Drive @ North Fork Peachtree Creek Bridge Replacement in Congressional District 6

Action: Addition to the Program



June 2017 CWP Revision

Board Revisions:

11. P.I. No. 142000-, Gwinnett and Walton Counties, SR 20 FM Sharon Church Rd to Brand Rd; Inc 3 intersections
Widening in Congressional Districts 7 and 10

Action: Change in Description
12. P.I. No. 0015648, Wilkinson County, CR 81/Rose Justice Road @ Big Sandy Creek 2.5 MI S of Irwington Bridge Replacement in Congressional District 8

Action: Addition to the Program
13. P.I. No. 0015655, Jones County, CR 118/Folendore Road @ Commissioner Creek 5.1 MI E of Gray Bridge Replacement in Congressional District 8

Action: Addition to the Program
14. P.I. No. 0015643, Monroe County, CR 275/Johnstonville Road @ Rocky Creek 5 MI N of Forsyth Bridge Replacement in Congressional District 8

Action: Addition to the Program
15. P.I. No. 0015654, Towns County, CR 295/Titus Vallet Road @ Hall Creek 6.7 MI E of Hiawassee Bridge Replacement in Congressional District 9

Action: Addition to the Program



June 2017 CWP Revision

Board Revisions:

16. P.I. No. 0015653, Fannin County, CR 159/Epworth Road @ Fightington Creek SW of McCaysville
Bridge Replacement in Congressional District 9

Action: Addition to the Program

17. P.I. No. 0015636, Habersham County, CR 225/Hub Road @ Sautee Creek 3 MI S of Batesville
Bridge Replacement in Congressional District 9

Action: Addition to the Program

18. P.I. No. 0015657, Union County, CR 463/Canada Creek Road @ Toccoa River SW of Blairsville
Bridge Replacement in Congressional District 9

Action: Addition to the Program

19. P.I. No. 0015635, Lumpkin County, CR 48/Roy Grindle Road @ Chestatee River Trib N of Dahlonega
Bridge Replacement in Congressional District 9

Action: Addition to the Program

20. P.I. No. 0015658, Putnam County, CR 29/Martins Mill Road @ Little River 4.5 MI NW of Eatonton
Bridge Replacement in Congressional District 10

Action: Addition to the Program



June 2017 CWP Revision

Board Revisions:

21. P.I. No. 0015645, Clarke County, CR 479/Belmont Road @ Shoal Creek 6.7 MI S of Winterville
Bridge Replacement in Congressional District 10

Action: Addition to the Program

22. P.I. No. 0015656, Oconee County, CR 592/Clotfelter Road @ Barber Creek 3 MI S of Bogart
Bridge Replacement in Congressional District 10

Action: Addition to the Program

23. P.I. No. 0015634, Jasper County, CR 362/Post Road @ Pittman Creek 8.7 MI N of Monticello
Bridge Replacement in Congressional District 10

Action: Addition to the Program

24. P.I. No. 0015633, Jasper County, CR 362/Post Road @ Murder Creek 7.7 MI N of Monticello
Bridge Replacement in Congressional District 10

Action: Addition to the Program

25. P.I. No. 0015632, Coffee County, CR 705/Bridgetown Road @ Satilla River 11 MI W of Douglas
Bridge Replacement in Congressional District 12

Action: Addition to the Program



June 2017 CWP Revision

Board Revisions:

26. P.I. No. 0015642, Fulton County, CR 614/Oakley Road @ Broadanax Creek 2 MI SE of Union City
Bridge Replacement in Congressional District 13

Action: Addition to the Program
27. P.I. No. 0015631, Clayton County, CR 506/Brown Road @ Swamp Creek 1 MI SW of Jonesboro
Bridge Replacement in Congressional District 13

Action: Addition to the Program
28. P.I. No. 0015647, Fayette County, CR 61/Coastline Road @ CSX #639500S 3 MI NE of Tyrone
Bridge Replacement in Congressional District 13

Action: Addition to the Program
29. P.I. No. 0015644, Dade County, CR 197/Newsome Gap Road @ Lookout Creek 7.5 MI SW of Trenton
Bridge Replacement in Congressional District 13

Action: Addition to the Program
30. P.I. No. 0015659, Gordon County, CR 214/Battle Road @ Rocky Creek 1 MI E of Floyd County Line
Bridge Replacement in Congressional District 14

Action: Addition to the Program



June 2017 CWP Revision

Board Revisions:

31. P.I. No. 0013089, Catoosa County, SR 2 @ CR 166/Smitherman Road
Turn Lanes in Congressional District 14

Action: Deletion from Program